



Study English *and work* IN DUBAI

All packages include:

- Registration fee
- English course (as chosen)
- Accommodation booking fee
- 4 weeks Accommodation in ESAW Twin Room Shared Apartment (max apartment occupancy 6 students) 1 Bathroom
- Material for the entire duration of the course
- Pick up at DXB airport
- Student visa for courses of 20 weeks and more

- 1-12 weeks travelling as a tourist (visa not included)
- **20-48** weeks travelling on Student Visa
- Package for reservations made until 30/06/2023 and courses starting until 31/12/2023

General English
20 lessons
(15 hours/week)
in the morning

2 weeks Price 835 USD	4 weeks Price 1,585 USD	8 weeks Price 2,417 USD	12 weeks Price 3,164 USD	20 weeks Price 5,360 USD	24 weeks Price 5,998 USD
28 weeks Price 6,509 USD	32 weeks Price 6,961 USD	36 weeks Price 7,376 USD	40 weeks Price 8,003 USD	44 weeks Price 8,630 USD	48 weeks Price 9,259 USD

General English
20 lessons
(15 hours/week)
in the afternoon

2 weeks Price 619 USD	4 weeks Price 1,153 USD	8 weeks Price 1,657 USD	12 weeks Price 2,152 USD	20 weeks Price 4,395 USD	24 weeks Price 4,865 USD
28 weeks Price 5,203 USD	32 weeks Price 5,593 USD	36 weeks Price 5,977 USD	40 weeks Price 6,445 USD	44 weeks Price 6,913 USD	48 weeks Price 7,381 USD

Semi Intensive English
25 lessons
(19 hours/week)
in the morning

2 weeks Price 963 USD	4 weeks Price 1,841 USD	8 weeks Price 2,929 USD	12 weeks Price 3,808 USD	20 weeks Price 6,318 USD	24 weeks Price 7,162 USD
28 weeks Price 7,651 USD	32 weeks Price 8,021 USD	36 weeks Price 8,292 USD	40 weeks Price 9,017 USD	44 weeks Price 9,743 USD	48 weeks Price 10,468 USD

Semi Intensive English
25 lessons
(19 hours/week)
in the afternoon

2 weeks Price 715 USD	4 weeks Price 1,345 USD	8 weeks Price 2,041 USD	12 weeks Price 2,728 USD	20 weeks Price 5,090 USD	24 weeks Price 5,633 USD
28 weeks Price 5,945 USD	32 weeks Price 6,353 USD	36 weeks Price 6,733 USD	40 weeks Price 7,285 USD	44 weeks Price 7,837 USD	48 weeks Price 8,339 USD



TERMS AND CONDITIONS

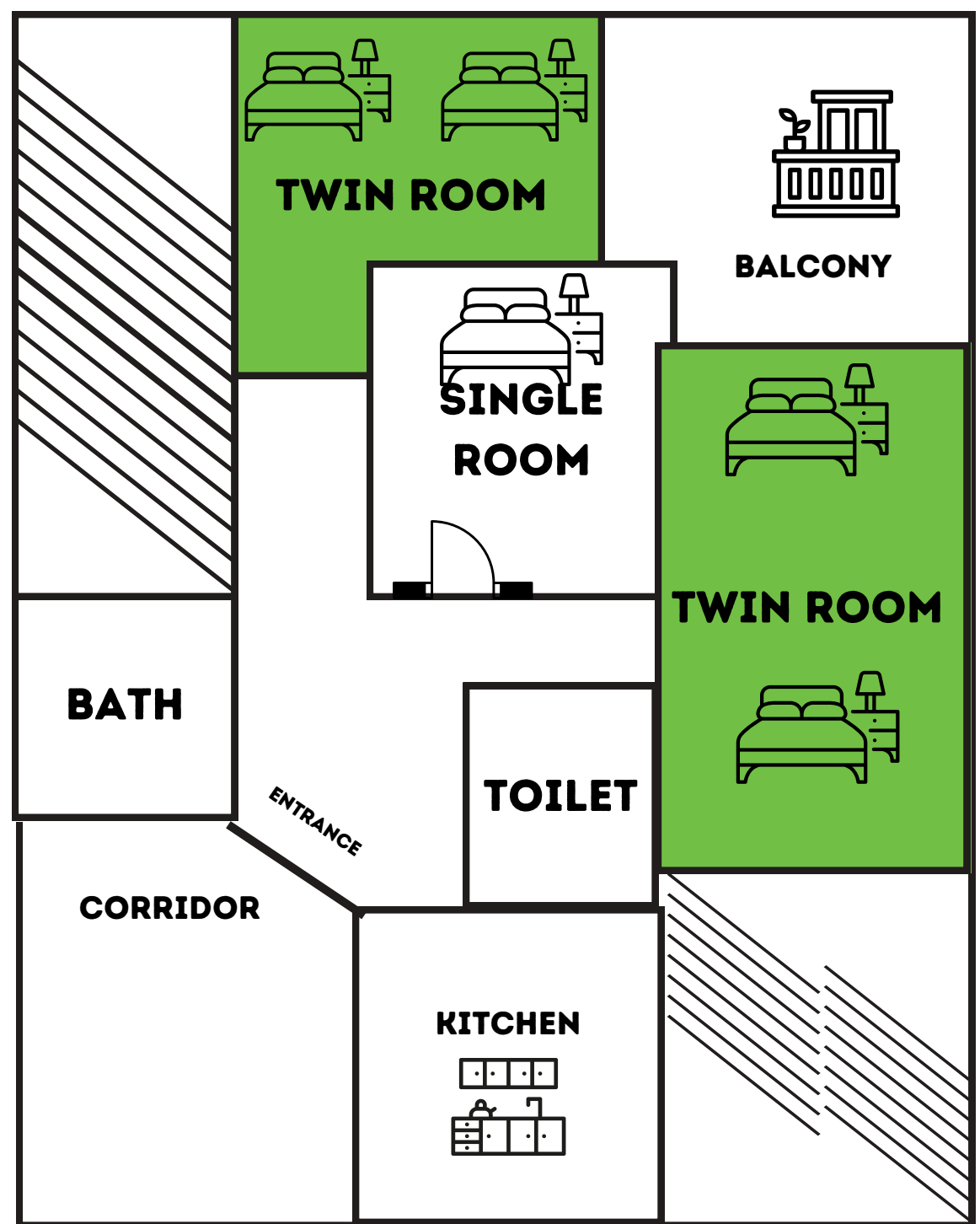
Accommodation included in package:

- o All package options include accommodation in ESAW Twin Room shared apartment (Type 2) (max apartment occupancy 5 people) 1 Bathroom
- o Additional weeks of accommodation in same type of room is USD \$120 per week
- o **Refundable deposit to be paid at check-in AED1000**



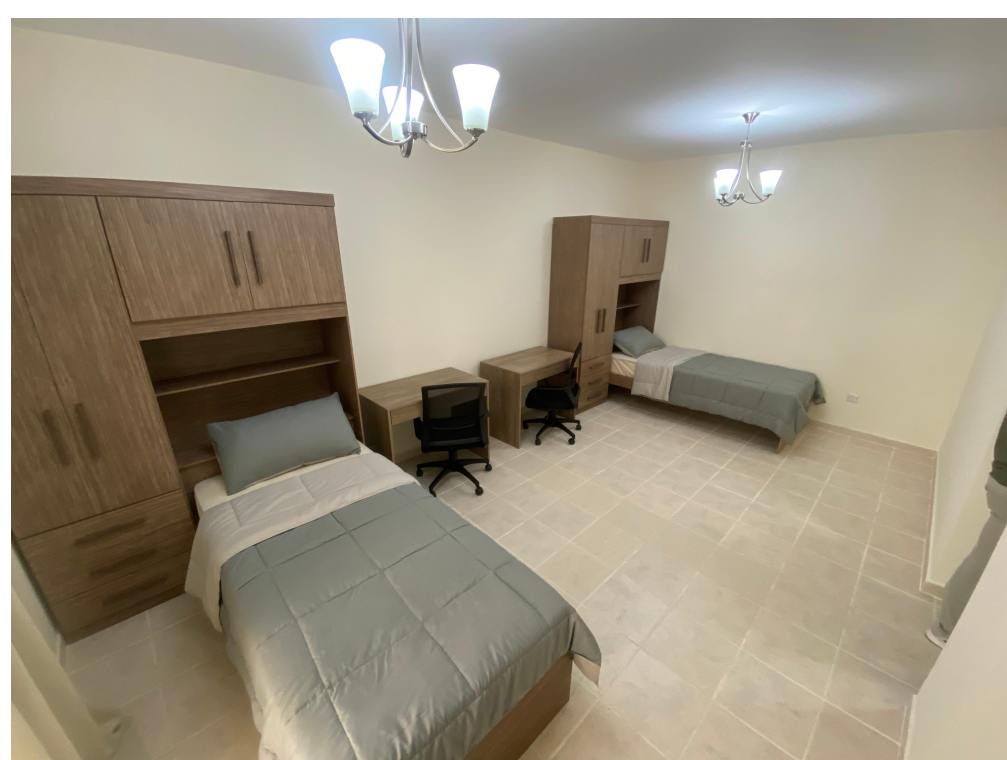
Twin Room in shared apartment (Type 2) included in the package for the first 4 weeks

Max . occupancy 5 people.



Accommodation upgrade options depending on availability:

- to ESAW Twin Room (Type 1), in 3-bedroom in large, shared apartment (max apartment occupancy 5 people) 1 Bathroom + 1 Toilet: \$USD10 per week for the 1st 4 weeks
- to ESAW Single Room (Type B) in 3-bedroom shared apartment (max apartment occupancy 5 people) 1 Bathroom + 1 Toilet: \$USD60 per week for the 1st 4 weeks
- to ESAW Single Room (Type A) 3-bedroom shared apartment (max occupancy 3 people) 1 bathroom + 1 toilet: \$USD120 per week for the 1st 4 weeks
- to ESAW Single Studio private bathroom : USD \$230 per week for the 1st 4 weeks



Visa:

- Packages from 4 to 12 weeks do not include a visa (you are travelling as a tourist*)
- *Most countries can enter Dubai as tourists for up to 90 days (12 weeks). That means you do not need to apply for a visa before you travel. Check with your local authority if you can enter Dubai as a tourist without applying for a visa.
- If you need to apply for a tourist visa the cost:
 - 30-day tourist visa –\$125
 - 60-day tourist visa –\$250
- Tourist visa extension cannot be extended in Dubai. Students need to leave Dubai to extend their tourist visa.
- Tourists cannot work.

Packages from 20 to 48 weeks include the official student visa (1 year)

Package valid for reservations made until 30/06/2023

Arrivals until 31/12/2023

Full payment must be made 4 weeks in advance.

TO START THE VISA PROCESS WE WILL NEED:

- Pay the visa fee or pay the entire invoice;
- Full cancellation terms and conditions are available at: <https://www.englishpath.com/policies-and-procedures>
- EP reserves the right to make changes and updates to the package at any time.

DOCUMENTATION NEEDED TO START THE STUDENT VISA PROCESS

- Copy of passport, cover and last page
- Passport size photograph with white background (high resolution 3x4)
- vaccination status
- Student commitment letter (we will send it to you)
- Complete address in the country of origin (Street + City + Country)
- Father's name (even if deceased)
- Mother's name (even if deceased)
- Mobile number in the country of origin (with international code + xx)

THE STUDENT VISA (MULTIPLE ENTRY) INCLUDES:

- Visa processing fee
- Medical examinations to be carried out in Dubai
- Basic medical insurance
- Emirates ID

ADDITIONAL INFORMATION

- SCHEDULE - classes run from Monday to Friday
 - General English Morning: Monday to Friday 9:00 - 12:15
 - General English Afternoon: Monday to Friday 13:45 - 17:00
 - Semi-intensive Morning: Monday – Thursday 9.00 – 13.30 & Friday 9.00 – 12.15
 - Semi intensive Afternoon: Monday – Thursday 12:30 - 17:00 & Friday 13:45 – 17:00 & Monday to Friday 09:00 - 12.15 & 13.45 - 17.00
- Free transport to and from residence to English Path by ESAW (for the 1st month then AED100) or The Myriad (free transport)
- Distance from ESAW to English Path -> 15 minutes



Study English *and work* IN DUBAI

All packages include:

- Registration fee
- English course (as chosen)
- Accommodation booking fee
- 4 weeks Accommodation in The Myriad Twin Room En-suite Bathroom
- Material for the entire duration of the course
- Pick up at DXB airport
- Student visa for courses of 20 weeks and more

- 1-12 weeks travelling as a tourist (visa not included)
- 20-48 weeks travelling on Student Visa
- Package for reservations made until 30/06/2023 and courses starting until 31/12/2023

General English
20 lessons
(15 hours/week)
in the morning

2 weeks Price 1,055 USD	4 weeks Price 1,945 USD	8 weeks Price 2,777 USD	12 weeks Price 3,544 USD	20 weeks Price 5,740 USD	24 weeks Price 6,398 USD
28 weeks Price 6,909 USD	32 weeks Price 7,361 USD	36 weeks Price 7,776 USD	40 weeks Price 8,403 USD	44 weeks Price 9,031 USD	48 weeks Price 9,659 USD

General English
20 lessons
(15 hours/week)
in the afternoon

2 weeks Price 839 USD	4 weeks Price 1,513 USD	8 weeks Price 2,017 USD	12 weeks Price 2,512 USD	20 weeks Price 4,755 USD	24 weeks Price 5,225 USD
28 weeks Price 5,563 USD	32 weeks Price 5,953 USD	36 weeks Price 6,337 USD	40 weeks Price 6,805 USD	44 weeks Price 7,273 USD	48 weeks Price 7,741 USD

Semi Intensive English
25 lessons
(19 hours/week)
in the morning

2 weeks Price 1,183 USD	4 weeks Price 2,201 USD	8 weeks Price 3,289 USD	12 weeks Price 4,168 USD	20 weeks Price 6,678 USD	24 weeks Price 7,522 USD
28 weeks Price 8,011 USD	32 weeks Price 8,381 USD	36 weeks Price 8,652 USD	40 weeks Price 9,377 USD	44 weeks Price 10,102 USD	48 weeks Price 10,828 USD

Semi Intensive English
25 lessons
(19 hours/week)
in the afternoon

2 weeks Price 935 USD	4 weeks Price 1,705 USD	8 weeks Price 2,401 USD	12 weeks Price 3,088 USD	20 weeks Price 5,450 USD	24 weeks Price 5,993 USD
28 weeks Price 6,305 USD	32 weeks Price 6,713 USD	36 weeks Price 7,093 USD	40 weeks Price 7,645 USD	44 weeks Price 8,197 USD	48 weeks Price 8,699 USD



TERMS AND CONDITIONS

• Accommodation included in package:

- All package options include accommodation in The Myriad Twin Room En-suite bathroom.
- The Myriad is approx. 60 minutes away from English Path Dubai.
- The Myriad offers free shuttle buses to and from Dubai Knowledge Village. Seats on buses cannot be guaranteed. First comes, first served.
- Additional weeks of accommodation in same type of room is USD \$210 per week
- Upgrade to Single room En-suite Bathroom at The Myriad USD \$90 per week

Visa:

- Packages from 4 to 12 weeks do not include a visa (you are travelling as a tourist*)
- *Most countries can enter Dubai as tourists for up to 90 days (12 weeks). That means you do not need to apply for a visa before you travel. Check with your local authority if you can enter Dubai as a tourist without applying for a visa.
- If you need to apply for a tourist visa the cost:
 - 30-day tourist visa –\$125
 - 60-day tourist visa –\$250
- Tourist visa extension cannot be extended in Dubai. Students need to leave Dubai to extend their tourist visa.
- Tourists cannot work.

Packages from 20 to 48 weeks include the official student visa (1 year)

Package valid for reservations made until 30/06/2023

Arrivals until 31/12/2023

Full payment must be made 4 weeks in advance.

TO START THE VISA PROCESS WE WILL NEED:

- Pay the visa fee or pay the entire invoice;
- Full cancellation terms and conditions are available at: <https://www.englishpath.com/policies-and-procedures>
- EP reserves the right to make changes and updates to the package at any time.



DOCUMENTATION NEEDED TO START THE STUDENT VISA PROCESS

- Copy of passport, cover and last page
- Passport size photograph with white background (high resolution 3x4)
- vaccination status
- Student commitment letter (we will send it to you)
- Complete address in the country of origin (Street + City + Country)
- Father's name (even if deceased)
- Mother's name (even if deceased)
- Mobile number in the country of origin (with international code + xx)

THE STUDENT VISA (MULTIPLE ENTRY) INCLUDES:

- Visa processing fee
- Medical examinations to be carried out in Dubai
- Basic medical insurance
- Emirates ID

ADDITIONAL INFORMATION

- SCHEDULE - classes run from Monday to Friday
 - General English Morning: Monday to Friday 9:00 - 12:15
 - General English Afternoon: Monday to Friday 13:45 - 17:00
 - Semi-intensive Morning: Monday – Thursday 9.00 – 13.30 & Friday 9.00 – 12.15
 - Semi intensive Afternoon: Monday – Thursday 12:30 - 17:00 & Friday 13:45 – 17:00 & Monday to Friday 09:00 - 12.15 & 13.45 - 17.00